

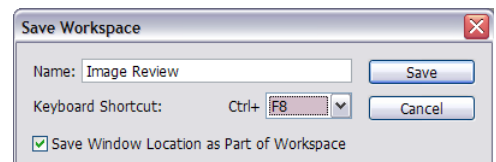
Adobe® Photoshop® cs2

But wait, there's more!

For all of the big changes that take place in a new version of Photoshop, there are a hundred (or more) minor adjustments that you might miss. You'll never see these items on the back of the box, but they can make Photoshop an even easier place to work.

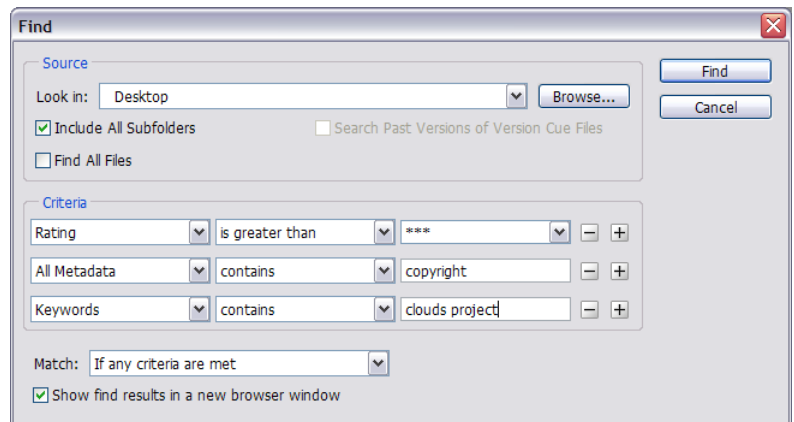
The Bridge, for example, is full of small shortcuts that will shave hours off of the time you spend reviewing and managing images. For example, the Preset workspaces for the four viewing modes in the Bridge (Lightbox, File Navigator, Metadata Focus and Filmstrip Focus) can be quickly cycled through using Control(Win)/Command (Mac) + \ (backslash). And when you create your own custom workspaces (Window > Workspace > Save Workspace) you can save keyboard shortcuts to access them quickly for various tasks such as image review, applying metadata, or rating images.

You can also open multiple Bridge windows and display them on your primary or secondary monitors. And to quickly toggle between compact and full viewing modes (or ultra-compact and full) simply use Control (Win)/Command (Mac) + Enter. Be careful of a little change that might throw you, Control (Win)/ Command (Mac) +D now duplicates items instead of deselecting them.



If you're like me and sometimes need a simple, clean and organized area to just view your thumbnails in the Bridge, use Control (Win)/Command (Mac) + T to toggle between Thumbnails and Thumbnails with additional metadata (names etc.). You probably noticed that folders are also listed alphabetically in the thumbnail area. And yes, you can now delete folders from the Bridge but be careful; there might be hidden files in them!

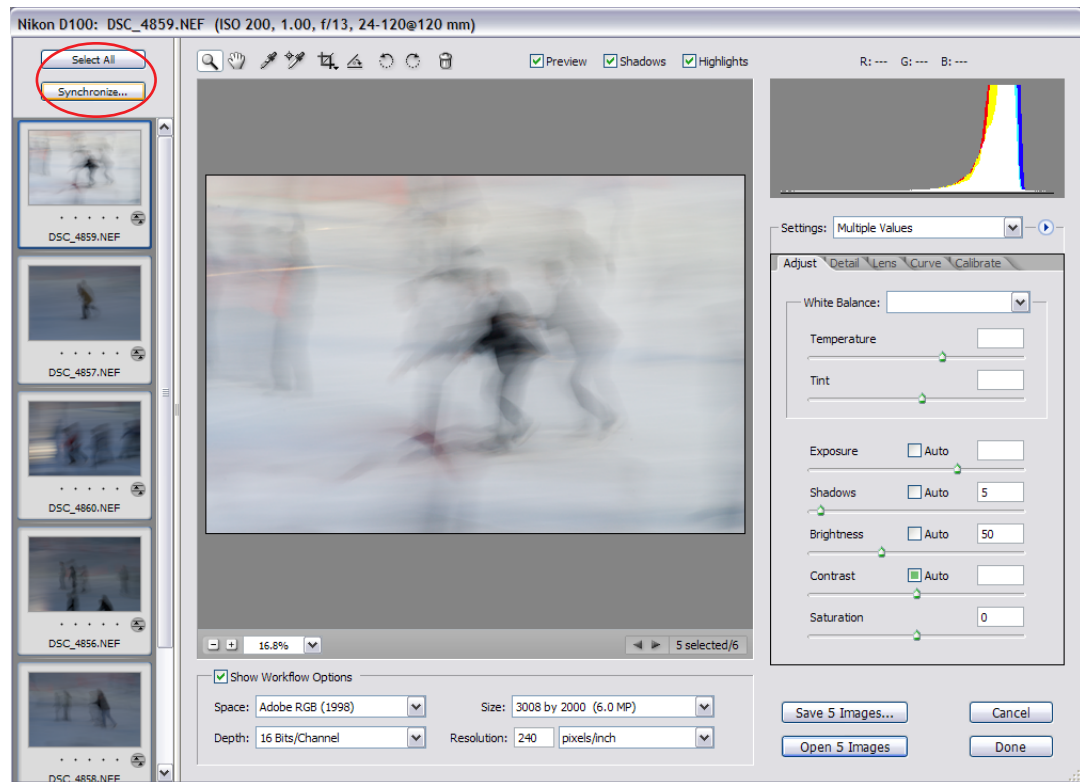
If you're looking for the search icon in the Bridge, don't panic! We lost the binoculars icon, but you can still search by selecting Edit > Find. In exchange for the binoculars, you get increased search criteria and parameters, saving multiple searches as collections (which repeat the search when selected – like watched folders) and anyway, I can always use (or use Control (Win)/ Command (Mac) +F) to quickly access the search function!



In order to eliminate repetitive tasks, you can now select multiple images and add File Info including important metadata to images. In Batch Rename, you can also choose to rename and make a copy of the files at the same time. And via Photoshop's Preferences > General, you can choose to "Automatically Launch Bridge" when opening Photoshop.

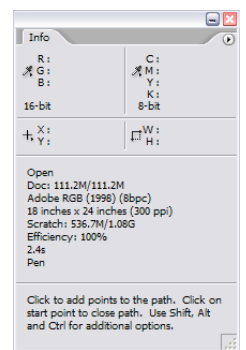
When I was first starting to editing multiple images in Camera Raw, I kept forgetting to select the desired images in the filmstrip and would only correct one. Luckily, after making changes to one image, you can select the others in the filmstrip that you need to apply the same settings to and click "Synchronize". In the Synchronize settings dialog, you can then fine-tune exactly which setting you want to affect. If you ever need to remove all of the settings that

you have applied to Raw files, choose Edit > Apply Camera Raw Settings> Clear Camera Raw Settings. In addition, there is built in support for DNG file format.



Duplicating layers and layer groups is easier than ever before. Simply hold down the Alt (Win) / Option (Mac) key, and drag one or more selected layers (or groups) in the Layers palette until you see the feedback bar, and let go. Voila, you have duplicates! You can also drag Layer Masks, Vector Masks, and Layer Styles from one layer to another by clicking and dragging the mask or "f" icon. Adding the Alt (Win) / Option (Mac) key, and dragging will duplicate them. Adding the shift key while dragging inverts the mask. Also, by default, when layer effects are applied to a layer, the effects icon appears "collapsed" saving room in the layers palette. To reveal the individual effects, click on the disclosure triangle next to the "f" icon.

The Info palette now displays values in 8, 16, or 32-bit values. Simply click on the eyedropper and tell Photoshop how much detail you want. Use the fly-out menu in the Info palette to display (or hide) your document size as well as other information such as profile, dimensions, scratch size etc. There is also a new area that displays "hints" about how to use the currently selected tool.



For years, the font menu in Photoshop has listed the name of the typeface, but left it up to you to recall what it looked like (or forced you to try different typefaces, one at a time). The WYSIWYG font menu in Photoshop CS2 shows you what the typeface looks like, as well as its format (Open t 1, True Type, etc.) New Type Preferences allow you to change the font preview size between small, medium and large.

A subtle but important change has been made to cursors in Adobe Photoshop CS2. In previous versions, the cursor would mysteriously disappear in front of 50% grey areas of the document. Now, all cursors are visible no matter what the background.

While in the Free Transform mode, using the Place command, or when cropping, you can now change layer opacity, zoom via the Navigator palette and hide and show individual channels with the Channels palette.

The Scripting Support in Photoshop CS2 has been enhanced to allow Photoshop to trigger Javascript scripts. For example, a script might automatically save a copy of every PSD file as a JPEG image, with a quality of 2, no color profile, etc. You might also scan metadata and EXIF data for a camera make and model, and notify the user of this fact.

Photoshop CS2 also gives you a variety of new blur options. Box blur creates a more square effect than Gaussian and is also very fast. Surface Blur needs to be seen to be believed, but it's great for softening skin and giving images that "dreamy soft-focus" look. Shape Blur blurs an object based on a particular shape. It's a tiny bit like light passing through an aperture of a given shape – try it, I think you'll like it.



Original Image

Box blur

Surface Blur

Shape Blur

Web Photo Gallery - There are three new Flash-based templates which make for much more dramatic presentations. To add a background audio track, rename any mp3 file to "useraudio.mps" and drop it into the template folder.

To help make printing easier, color management options are available in the Print Preview dialog box with easy and descriptive choices like "Let Photoshop Determine Colors" or "Let Printer Determine Colors".

For web designers, slicing functionality has been enhanced within Photoshop to allow selection of multiple slices. This allows changing multiple slice options/attributes at a time and for distributing, combining, and aligning of slices. There is also a new contextual menu for slices via the slice tools.

The Quick List:

- Variables and Animations are now supported in both Photoshop and ImageReady
- To make the most of systems running 64-bit processor, Photoshop CS2 can now address more than 2 GB of RAM. (The total varies between platforms.)
- PhotoMerge now works in 16 bit as do the following filters: Radial blur, De-interlace, Lens flare, Fibers, NTSC colors. Shadow/Highlight works in CMYK mode
- Palettes that are hidden behind other palettes (not just grouped) will display a (-) next to its name in the Window menu.
- Window Tiling can be oriented either horizontally or vertically.
- Using the place command now automatically creates a smart object
- Zooming in and out on an image can be performed with a mouse Scroll Wheel (assuming you have a device that supports it)
- The Display & Cursors preferences can be set to show Full-Size brush tip (as opposed to Normal which only shows 50% opacity and greater which can be misleading on a large, soft-edged brush.) You can also choose to "Show Crosshair in Brush Tip" for additional precision.